

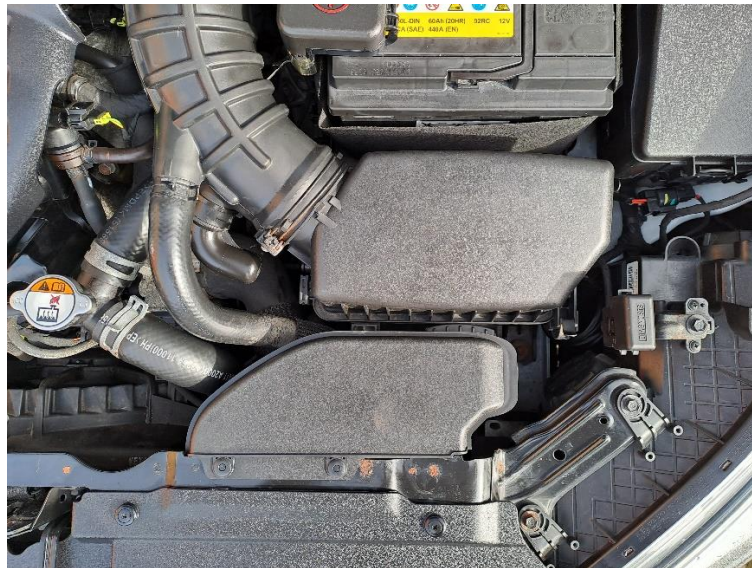


FMDV42 Fitting Instructions

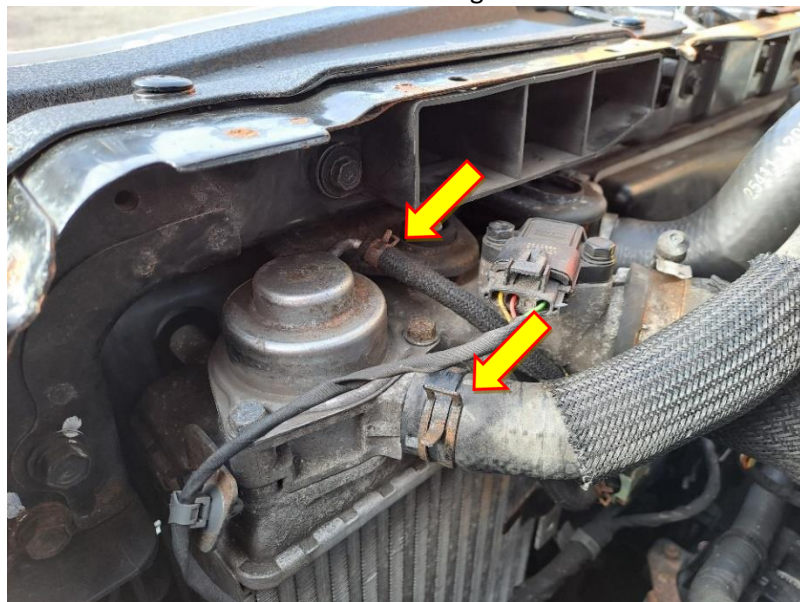
Please thoroughly read through and familiarise yourself with these instructions in their entirety prior to beginning any part of the installation process of any component. Please also ensure the vehicle and engine has cooled down sufficiently to avoid risking possible skin burns or other injury.



1. Remove the factory airbox, so that you can access the OE valve under the slam panel.

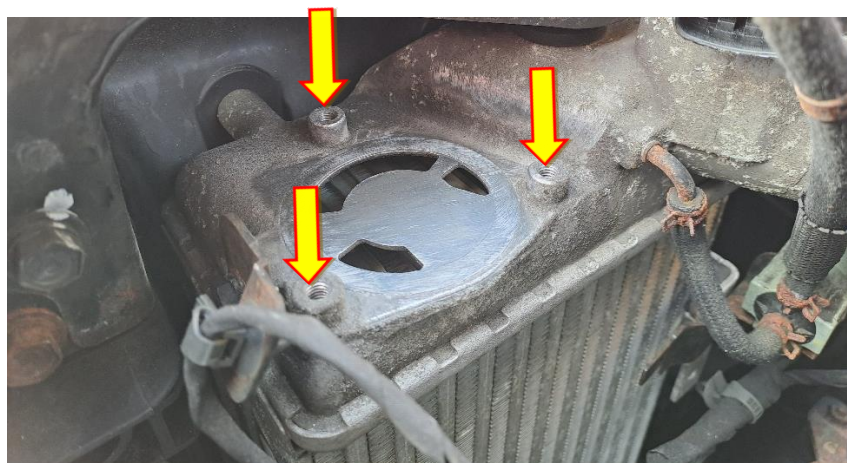


2. Unclamp and remove both the small vacuum hose and large recirculation hose.



3. Undo the 3 bolts holding the OE valve in place.

4. Remove the valve and the recirculation plate.



5. With the rubber o-ring facing down, place the Forge spacer plate in position



6. Place the Forge Motorsport valve on top of the spacer plate, align the 3 holes and bolt in position using the supplied bolts and washers.



- Using pliers either re-attach the OEM vacuum line to the Forge Motorsport valve, or replace it with the supplied vacuum line.



- Use the supplied blanking plug to seal off the recirculation hose on the OEM inlet hose to the factory airbox.
- Fit the factory airbox back to the vehicle.
- You have now successfully installed your Forge Motorsport dump valve, check that everything is tight and take your car for a test drive.

Check out www.forgemotorsport.co.uk
and www.forgemotorsport.com
For a full range of performance products for your vehicle.

*If you have any questions or concerns about this product
or anything else, please feel free to contact your local or preferred
Forge Motorsport Dealer/Installer or you may contact us directly.*

Forge Motorsport UK (+44)1452 380999
Forge Motorsport USA (407)-447-5363
Forge Motorsport ASIA +886-4-22516887

info@forgemotorsport.co.uk
sales@forgemotorsport.com
sales@forgemotorsport.asia

