



PORSCHE 997 GEN 2 TWIN TURBO INTERCOOLER INSTALLATION



Tools required:

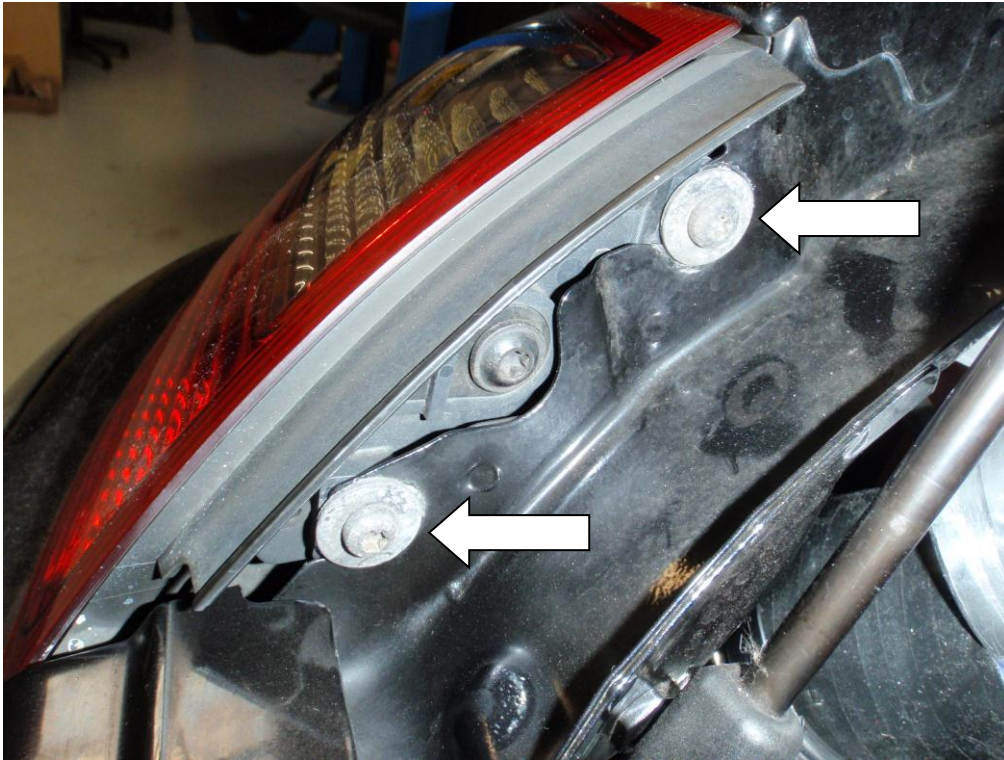
Torx T25 screwdriver

10mm/12mm socket and suitable ratchet

Dremel or similar with sanding disc

Flat head screwdriver

1. It is quite awkward to remove the screws in the wheel arch and remove the lower rubber intercooler pipes. So we advise removing the wheels jacking up each side of the car in turn, and lowering down onto axle stands which gives enough clearance. Open the engine cover and remove the two T25 screws that hold the light in position, then pull the light towards you and remove the electrical connection on the rear.



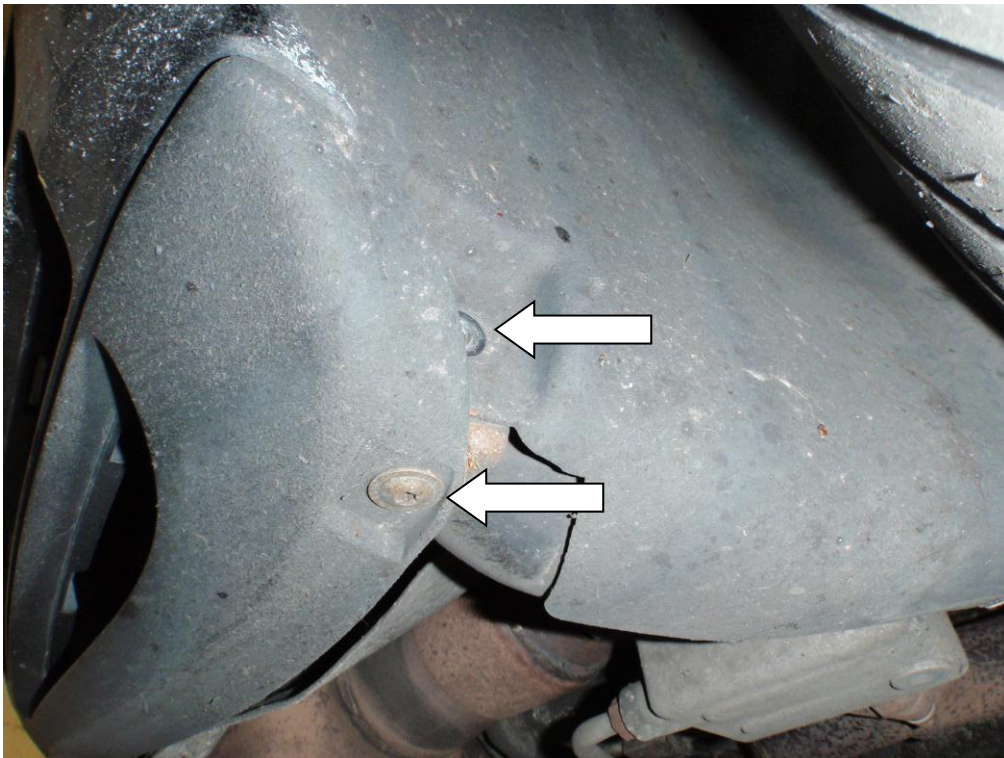
2. Remove the small plastic torx screw and pull out the plastic grommet.



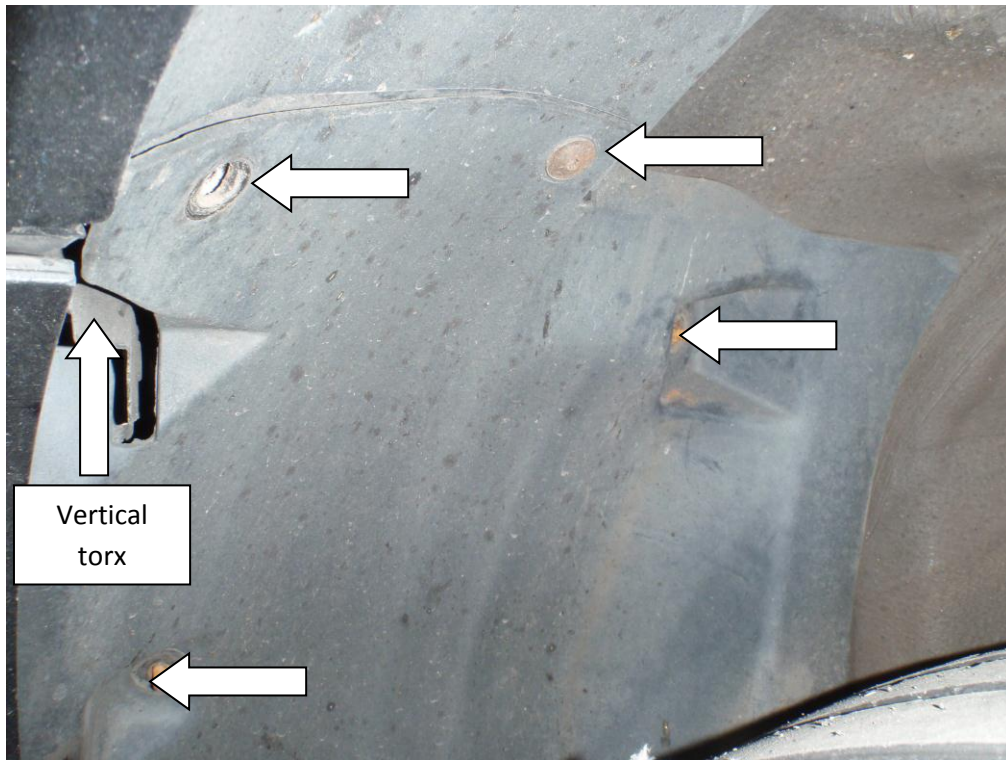
3. With both lights removed, undo the four torx screws that hold the top of the bumper



4. Working on the lower edge of each wheel arch, undo the two torx screws shown below.



5. Working in each wheel arch undo the four T25 torx screws on the edge. Now remove the single T25 torx screw which goes vertically upwards into the rear wing.



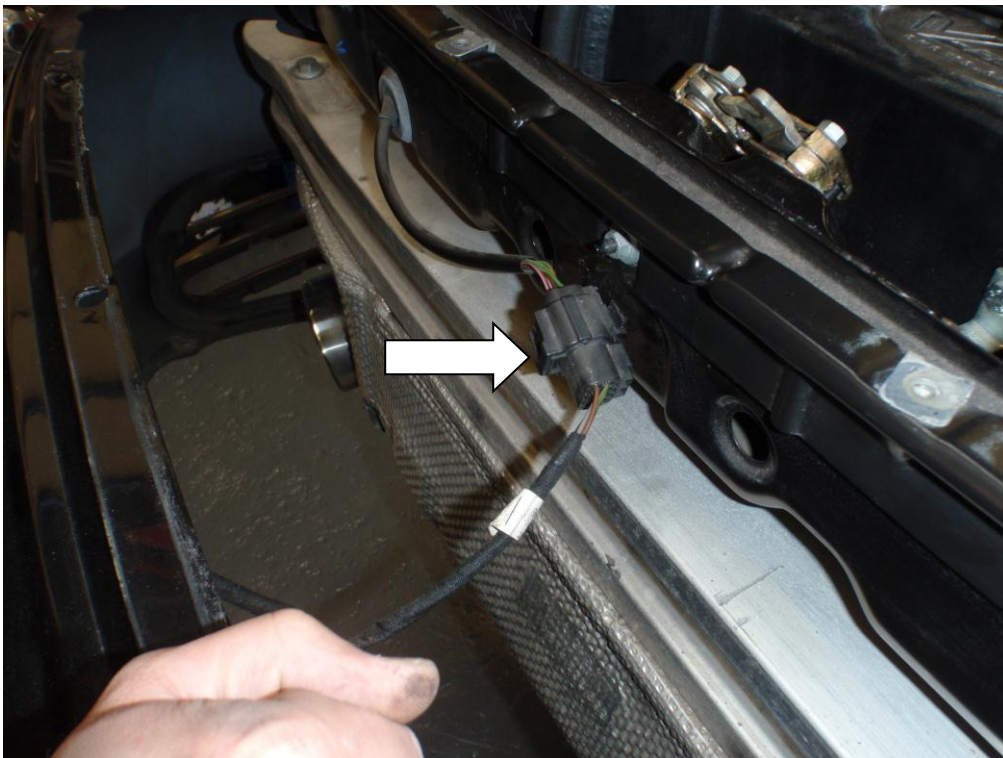
6. Finally remove the two torx screws at the bottom edge of the arch liner, then pull the arch liner off and remove from the car on each side.



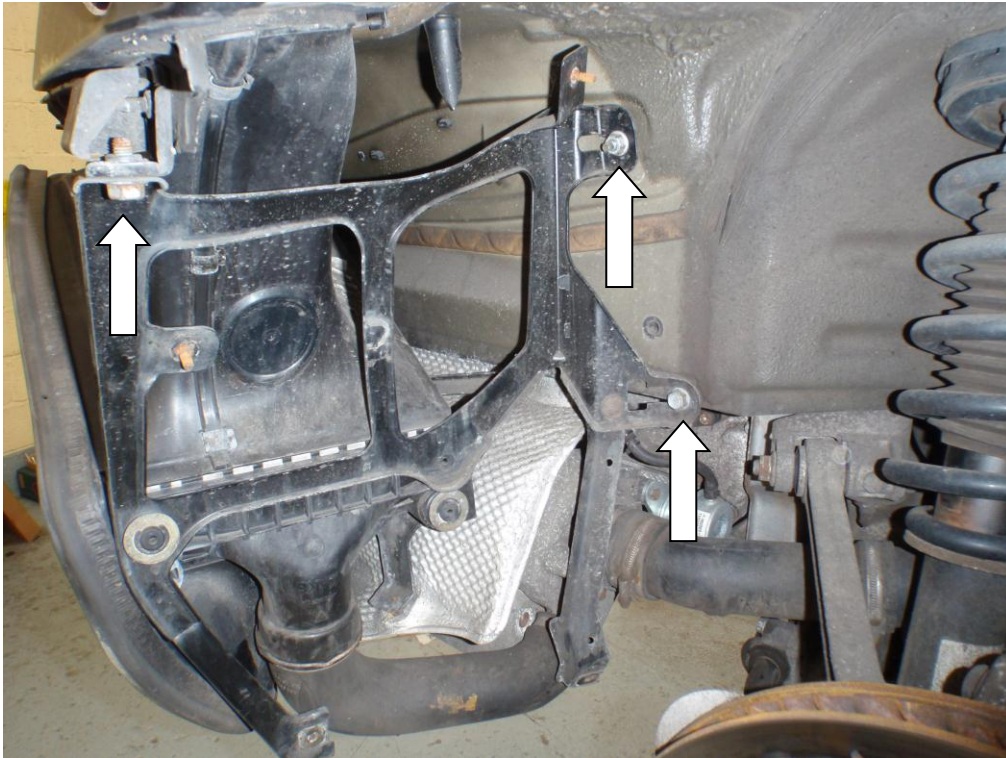
7. Now to fully release the bumper, remove the two torx screw either side of exhaust pipe on each side.



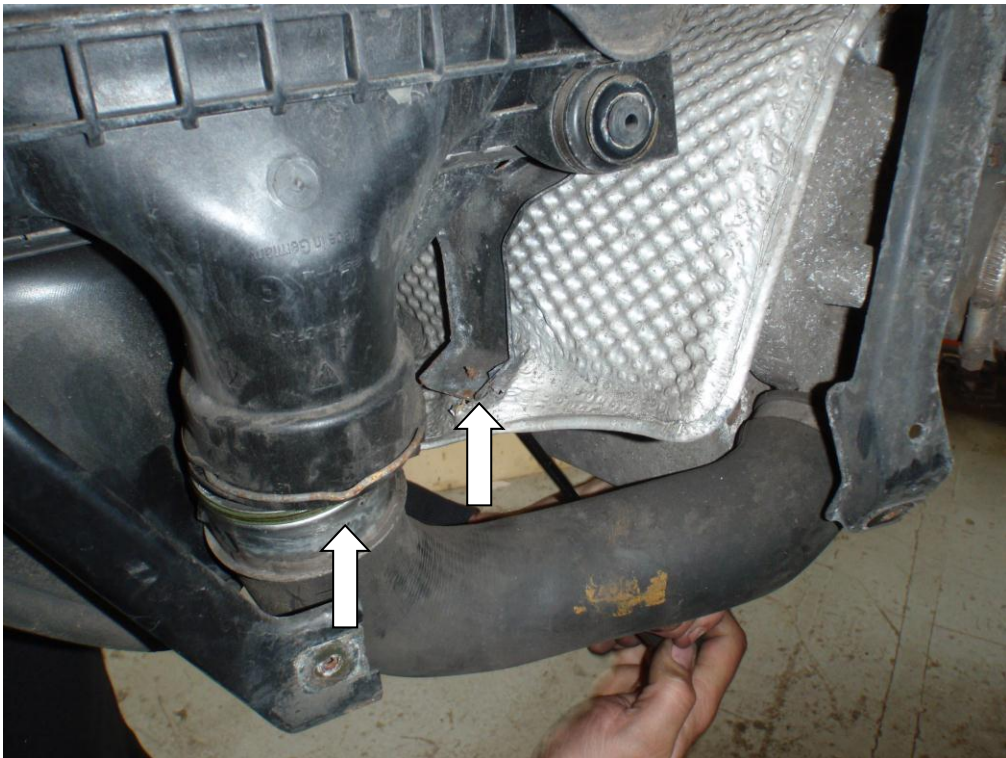
8. Now with the help of an assistant, tug the bumper rearwards off the plastic runners in the rear wings. When the bumper is pulled away enough, you will need to disconnect the electrical plug for the parking sensors and lights before removing the bumper completely and storing it somewhere safe.



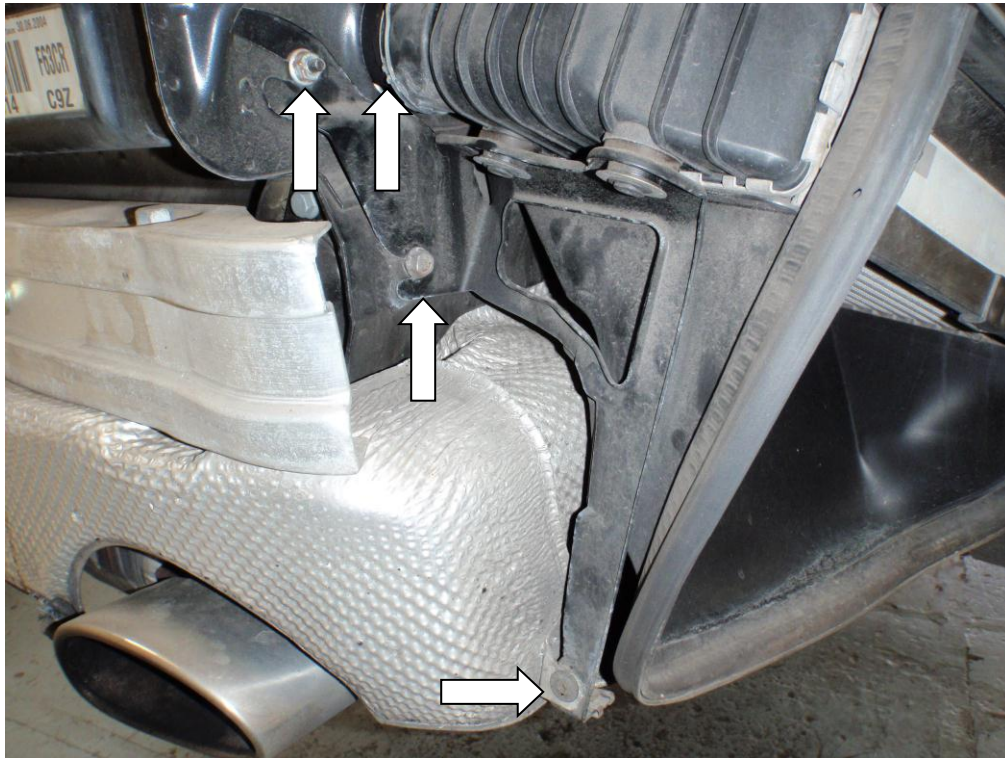
9. On the end of the intercooler nearest the wheel, remove the two bolts and single nut holding the end of the intercooler frame to the chassis.



10. Now release the intercooler hose by inserting a screwdriver in the raised section of the clip and pulling it outward to release the hose. The other end is joined to the intercooler with a simple jubilee clip. Also undo the two 10mm screws holding the intercooler frame to the exhaust heat shield.



11. On the other end of the intercooler, remove the clip securing the intercooler outlet hose and pull it out into the engine compartment. The hose can now be removed from the engine. Remove the torx screw holding the frame to the exhaust heat shield, and the nut and bolt holding the frame to the car. The intercooler and frame can now be manipulated out of the car.



12. To remove the intercooler from the frame, prise the circlip out from each rubber mount, four in total. This will allow the grommet to be pushed through the frame and the intercooler with its plastic ducting to be removed. Retain the circlip and washers from each grommet for later use.



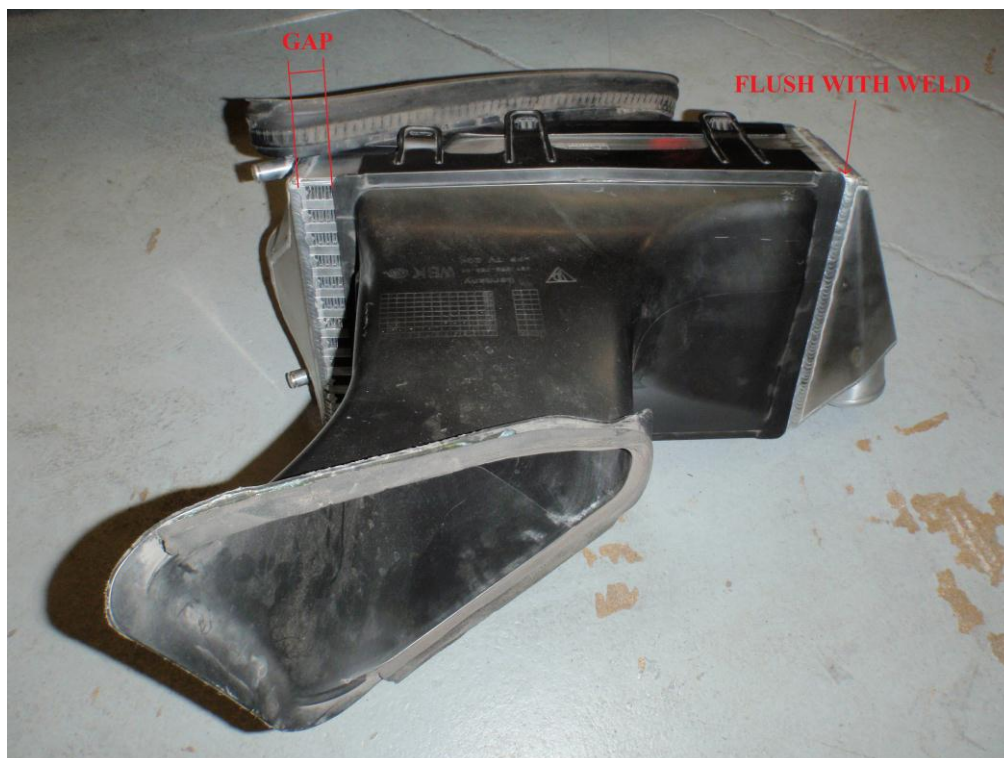
13. Unclip the upper and lower plastic ducting from the intercooler by pulling back on the end of the plastic clips – again you may need a screwdriver as these are tight.



14. The new cores are slightly thicker so using a dremel or similar, you will need to remove plastic from both sides of the ducting as shown below, just leaving the vertical strips of plastic holding the clips on one side, and the clip receptacles on the other.



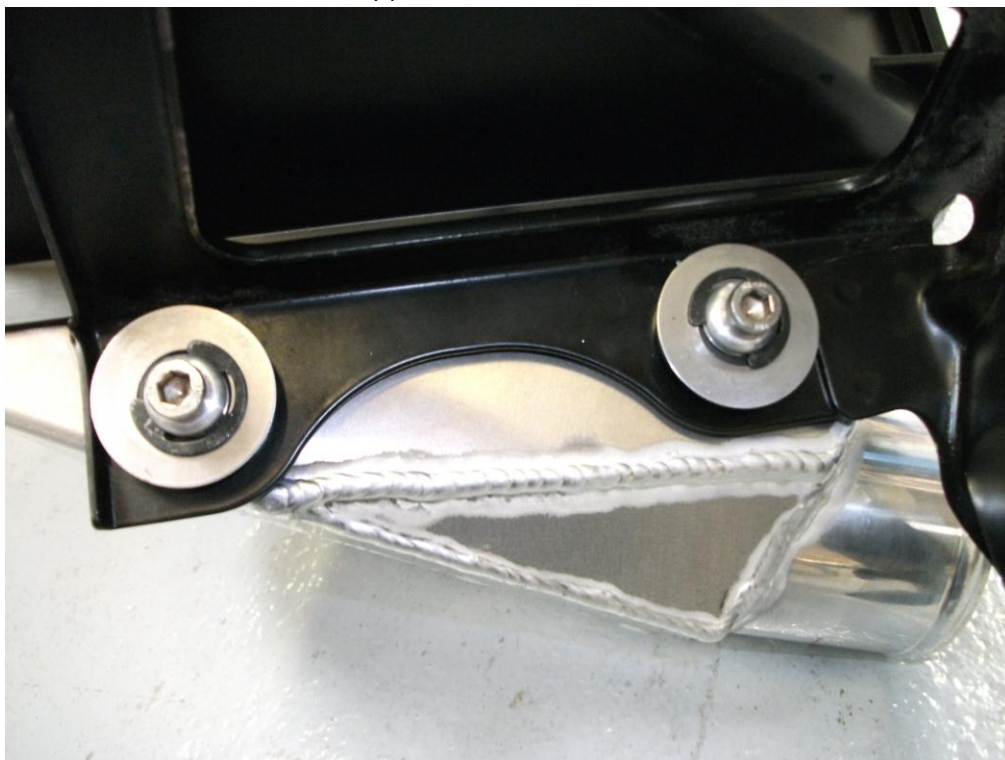
15. Of the two Forge intercoolers supplied, find the correct one for the side you are working on and reassemble it into the plastic ducting. Ensure that the ducting is offset to the core as you fasten all the clips.



16. Gently ease the plastic clips into position with a screwdriver.



17. Push in the bottom end with the welded boss, Line the threaded holes on the intercooler up with the rubber grommets on the frame. This time assembly is a little different – push the circlip onto the aluminium boss supplied FIRST, then place the washer under the circlip, then bolt the whole lot to the intercooler through the rubber grommet as shown below. You MUST use Loctite or a similar product in order to seal the threads as they protrude into the intercooler endtanks.



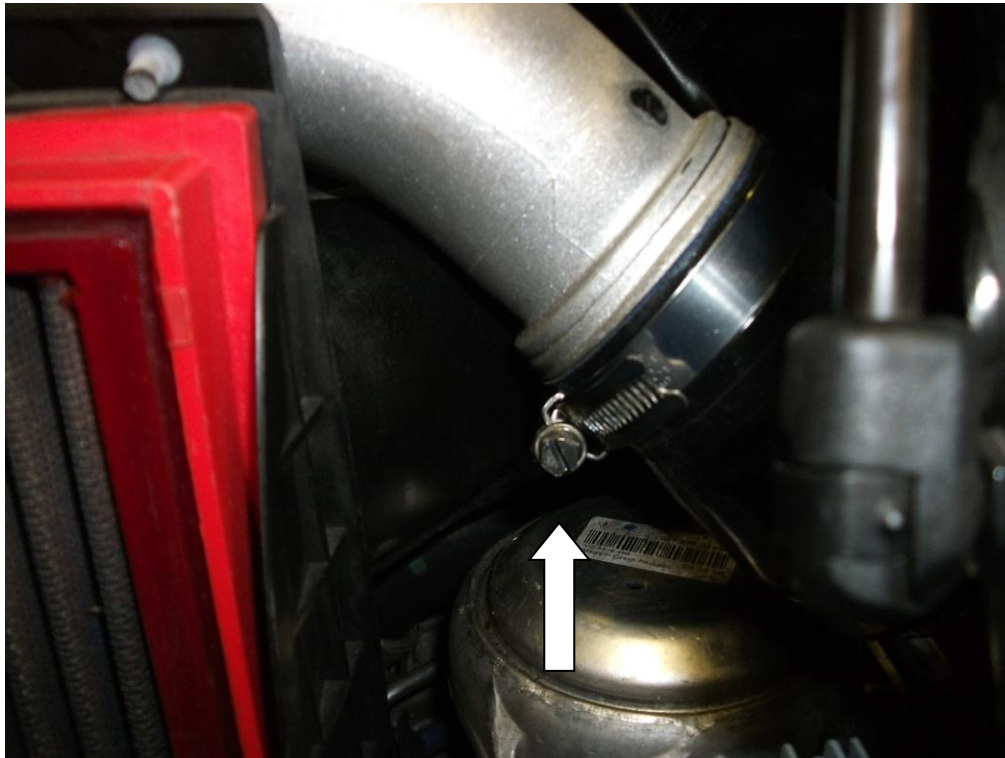
18. The bottom grommets are welded in position, use a pair of long nose pliers to reattach circlip.



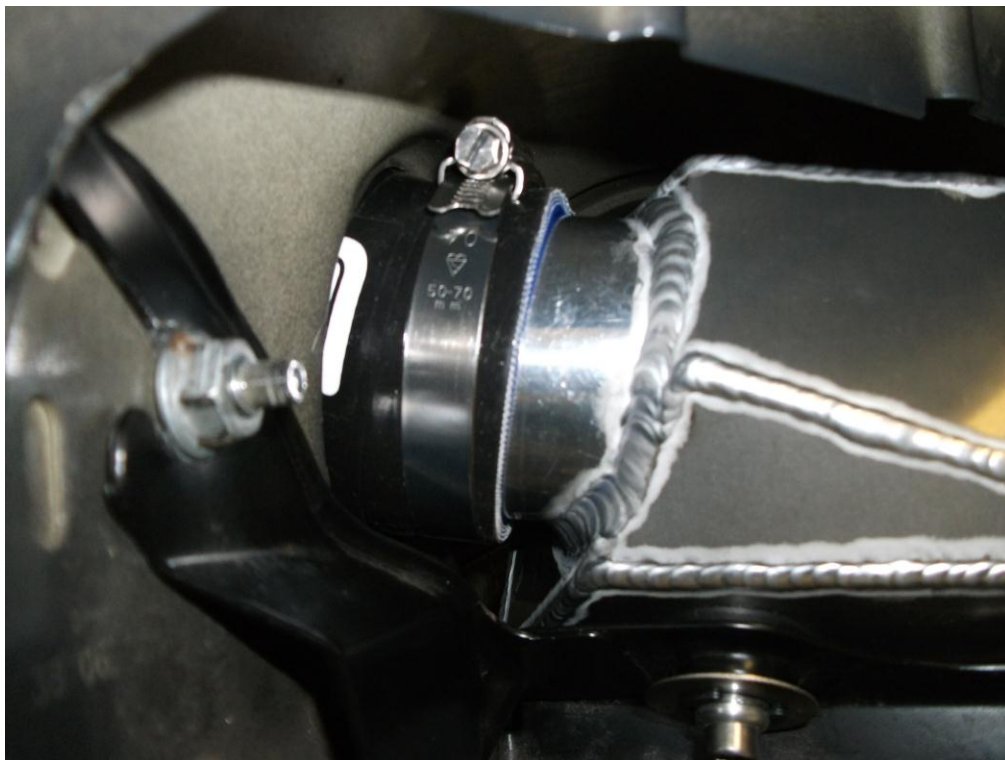
19. Remount the intercooler to the car following steps 9&10 excluding the guidance on the hoses.



20. Position a jubilee clip over the end of the intercooler where it passes through the chassis and into the engine bay. You may need to completely undo the jubilee clip to pass it around the intercooler pipe. And push them securely over the crossover pipe in the engine bay and securely clamp into place.



21. Position a jubilee clip over the end of the intercooler where it passes through the chassis and into the engine bay. You may need to completely undo the jubilee clip to pass it around the intercooler pipe. Tighten the jubilee clips.



22. On the lower intercooler pipe, use the silicon hose supplied and secure with jubilee clips. The hose is subtly different each side so they cannot be mixed up.



Installation is now complete. Please reassemble the car using steps 7-1 in reverse order.



Engineered for performance