



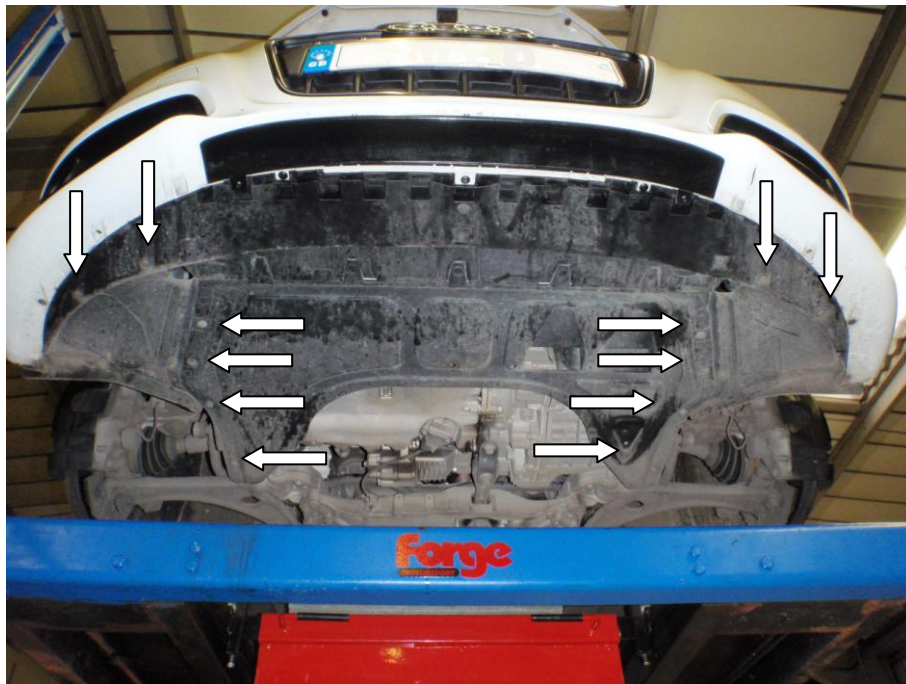
Audi S3 2010 Intercooler Installation



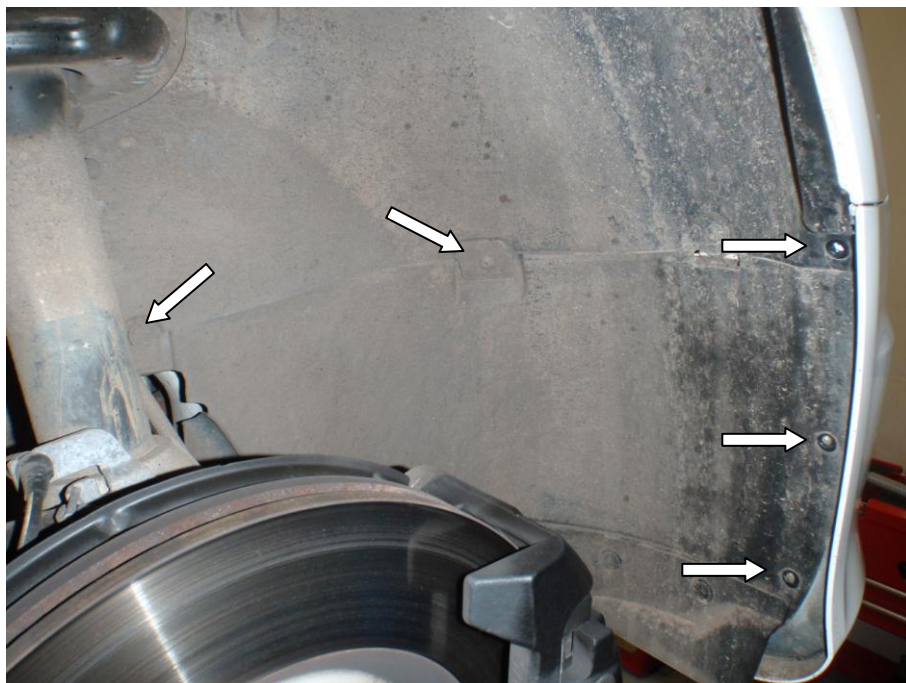
Tools Required:

Flat headed screw driver
10mm socket and suitable ratchet
T20 Torx driver
T25 Torx driver
T30 Torx driver
7mm hose clamp driver
5mm allen key

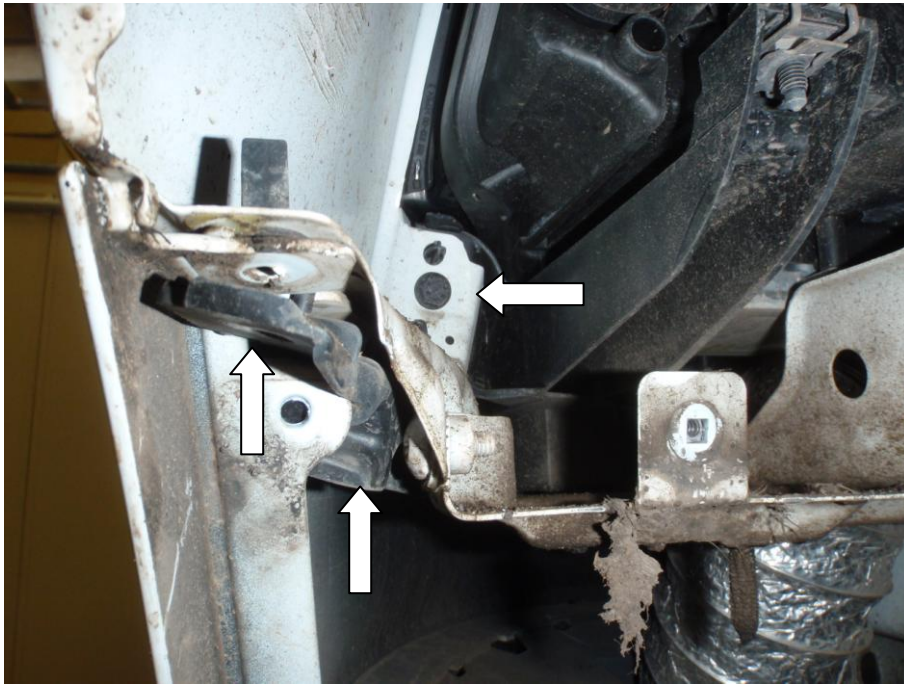
1. Jack up the car and secure with axle stands, remove the wheels for ease of removing arch liners and remove under tray.



2. Undo the T25 torx and remove bottom part of arch liner.



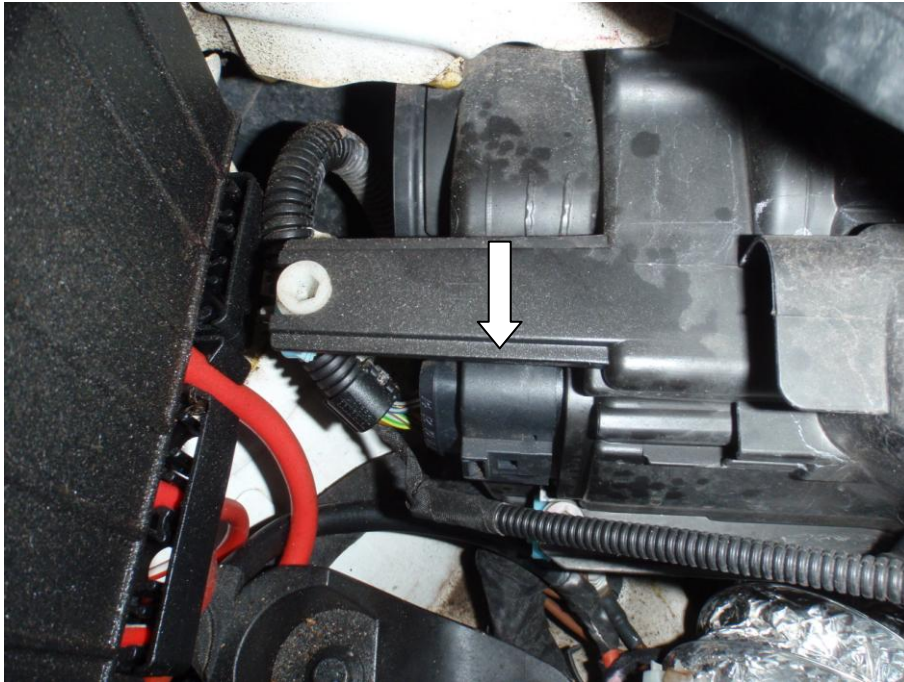
3. The bumper is attached on the inside of the arch with two T25 torx screws and one 13mm bolt.



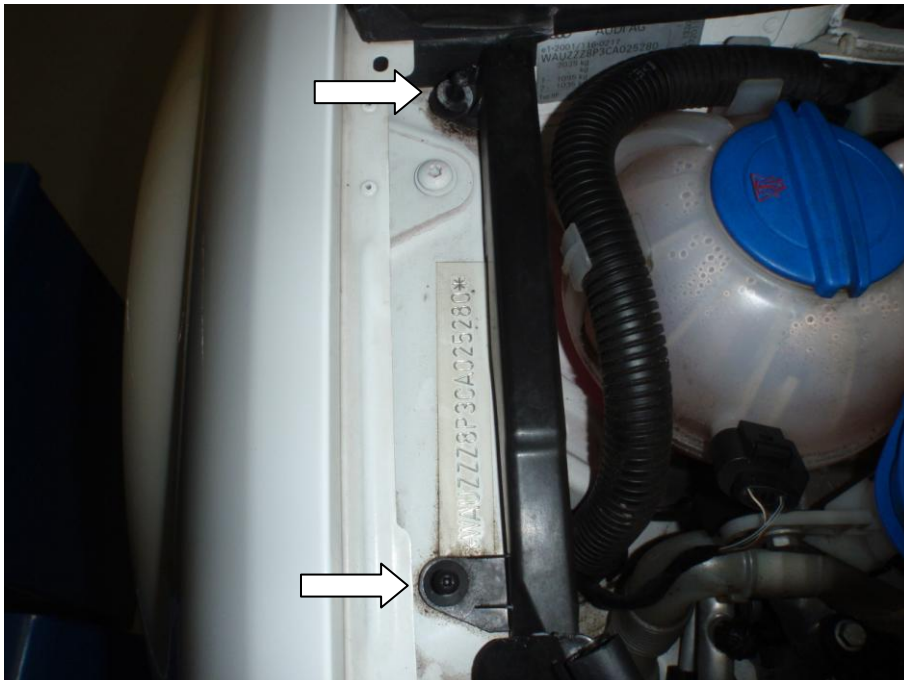
4. Unclip the spot lights.



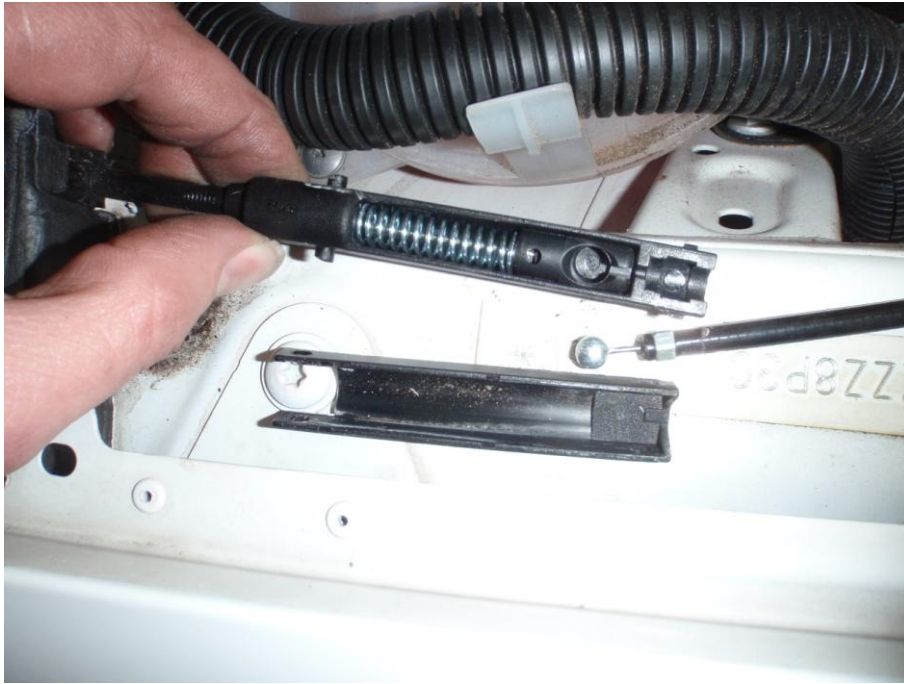
5. Moving to the engine bay unclip the main lights.



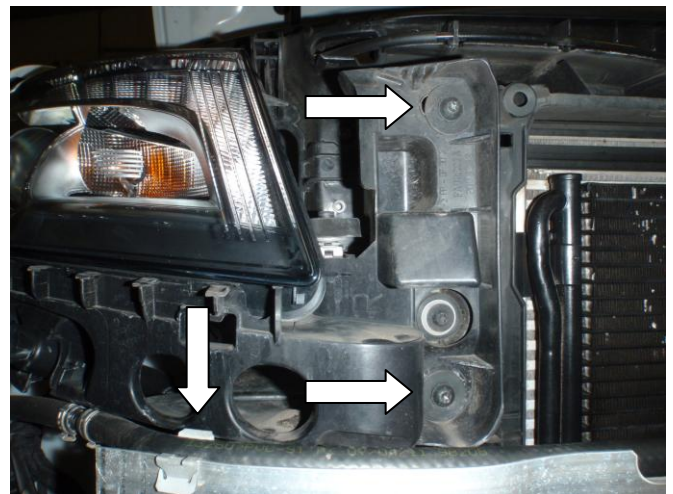
6. Next to the washer bottle and header tank undo the T20 torx and remove the cover from the bonnet cable.



7. Unclip the second plastic cover and take out the cable.



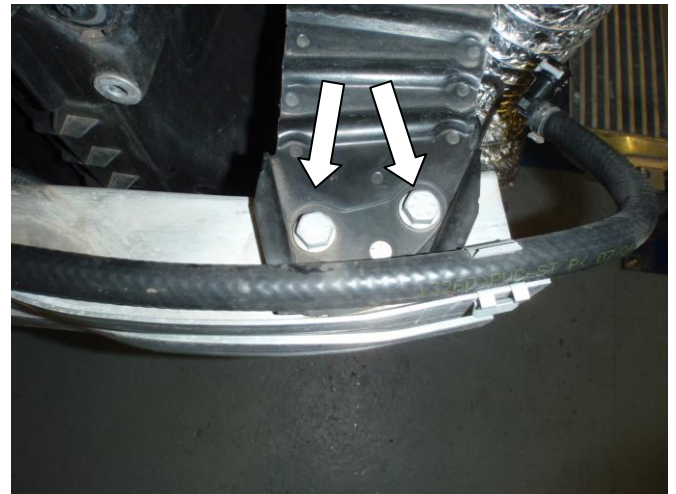
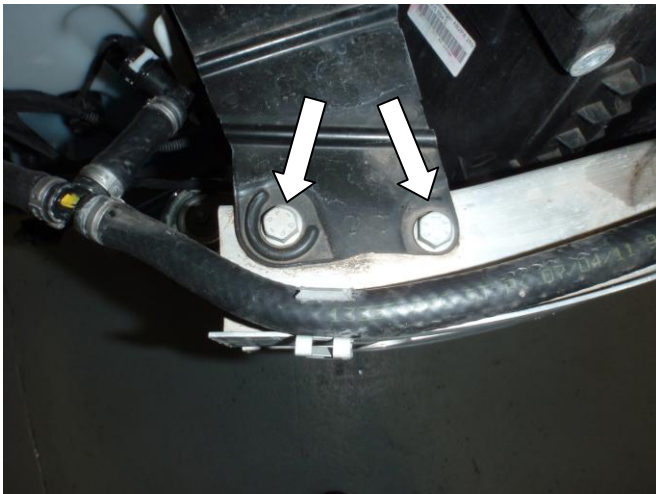
8. Remove the three remaining T30 torx from the top of the bumper and remove.
9. Undo the T30 torx from the lights, unclip the washer hose as this helps removal of the plastic surround.



10. Unclip the washers and remove the lights and plastic surround.



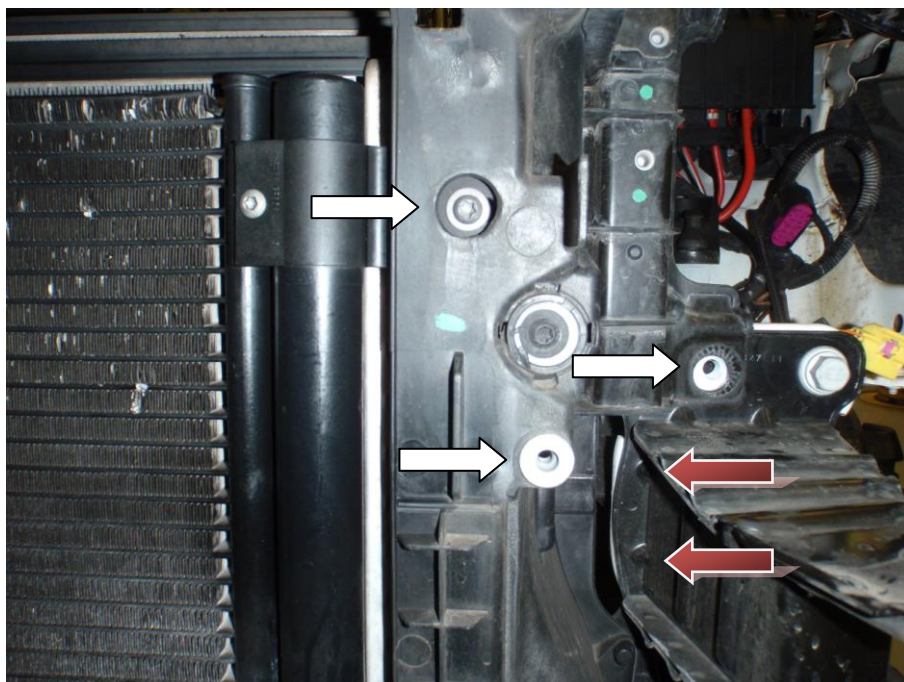
11. Undo the bolts holding the crash bar and remove.



12. Unclip the plastic ducting.



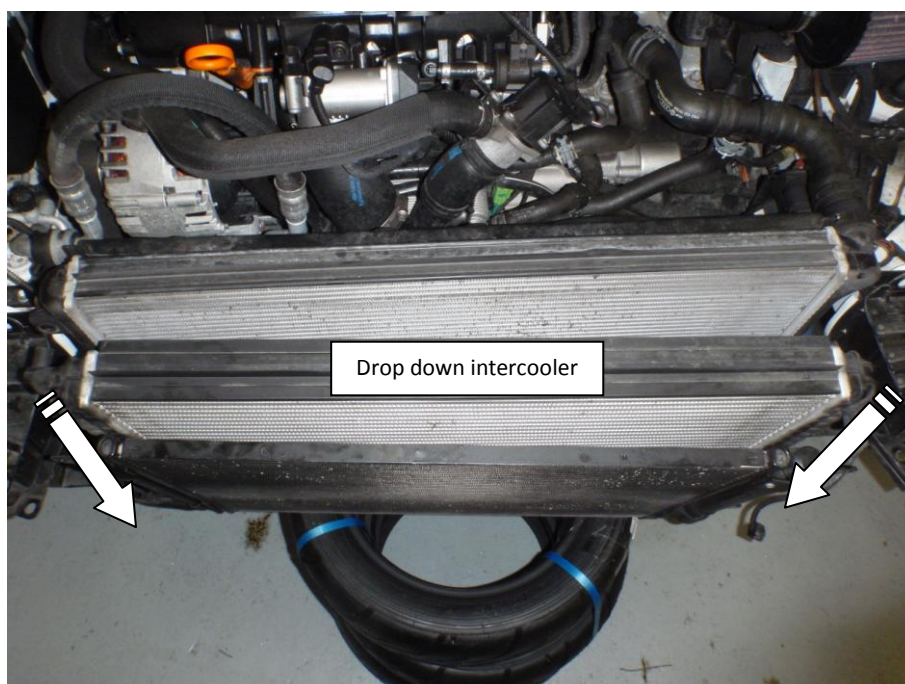
13. Undo the T30 torx and T25 torx holding the intercooler to the radiator pack and chassis. The red arrows indicate where four T20 screws are positioned behind the crash bar support.



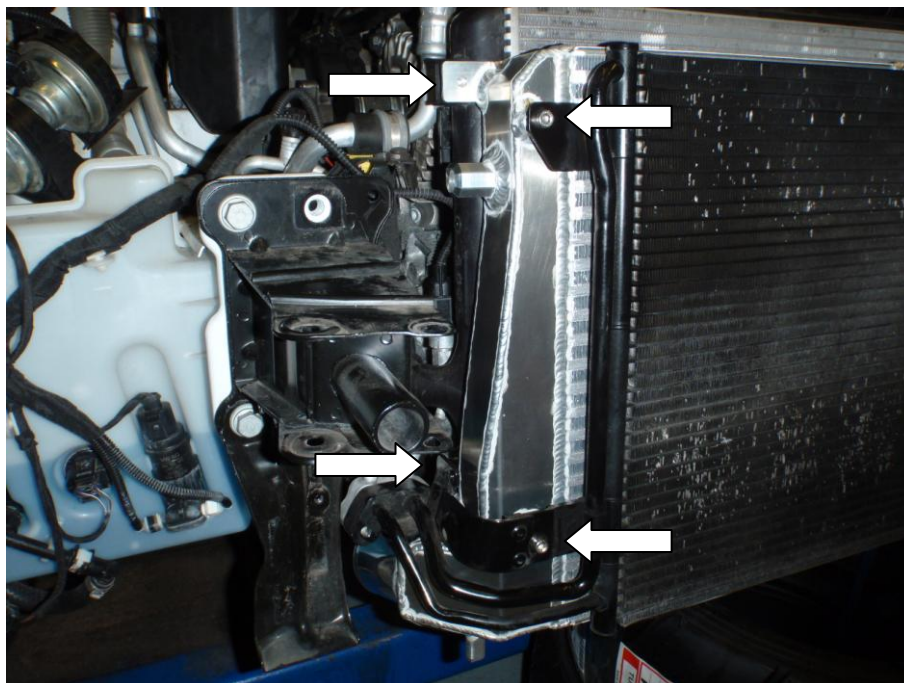
14. You will now need something to hold the intercooler, radiator and air-conditioning in position so the stock intercooler can be removed. We found a few tyres offered the correct height and being rubber they would not damage the radiator pack.



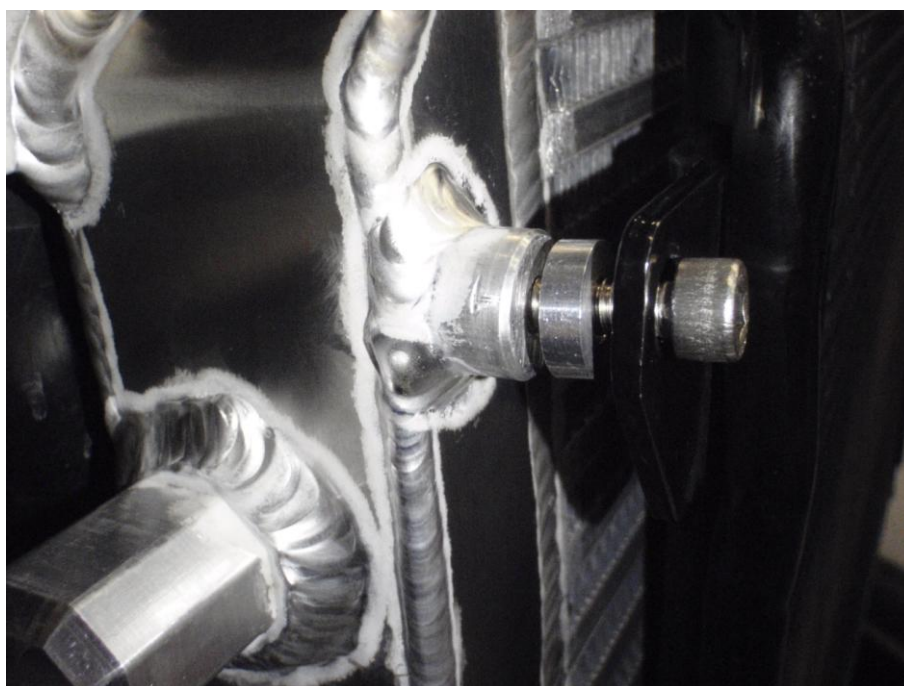
15. Undo the T30 screws holding the air-conditioning to the intercooler, undo the screws behind the radiator holding the radiator to the intercooler.
16. You will need some help at this point open out the radiator and air-conditioning. Move support (tyres) out of the way, drop the intercooler downwards and remove from car. Install the new intercooler in reverse order.



17. Attach the new intercooler with the bolts supplied in kit. The longer bolts attach the air-conditioning to the intercooler, See step 18. The shorter bolts are for the radiator fitting to the intercooler.



18. Use the longer bolts supplied and fit the spacers also supplied in kit, this gives the air-conditioning enough space so as not to rub on the intercooler.



19. Your installation is now complete refit all other parts in reverse order, following steps 1 to 13.



Dump valve and high flow dump valve are now offered on this car
Silicon hoses (longer life and durability)
Braided brake lines (improves efficiency and strength)



ENGINEERED FOR PERFORMANCE

