



NISSAN JUKE DIG- T 1.6T FMIC & HARDPIPE KIT

INSTALLATION INSTRUCTIONS



Please thoroughly read through and familiarize yourself with these instructions in their entirety prior to beginning any part of the installation process of any component. Please also ensure the vehicle and engine has cooled down sufficiently to avoid risking possible skin burns or other injury.

Tools Required:

Access to vehicle lift or floor jack and axle stands to support the vehicle

Small Flat blade screwdriver and Posi-drive screwdriver

10mm Spanner

13mm, 16mm Socket, Extension bar and Ratchet

5mm Allen key

Large Pliers

7mm Hose Clamp Driver.

2 Off Large Cable Ties

Safety eyewear, footwear, gloves and protective clothing are also recommended.

Engineered for performance

1. Raise the vehicle on a ramp or suitable axle stands, to allow access to the underside of the front of the car. Open the bonnet.

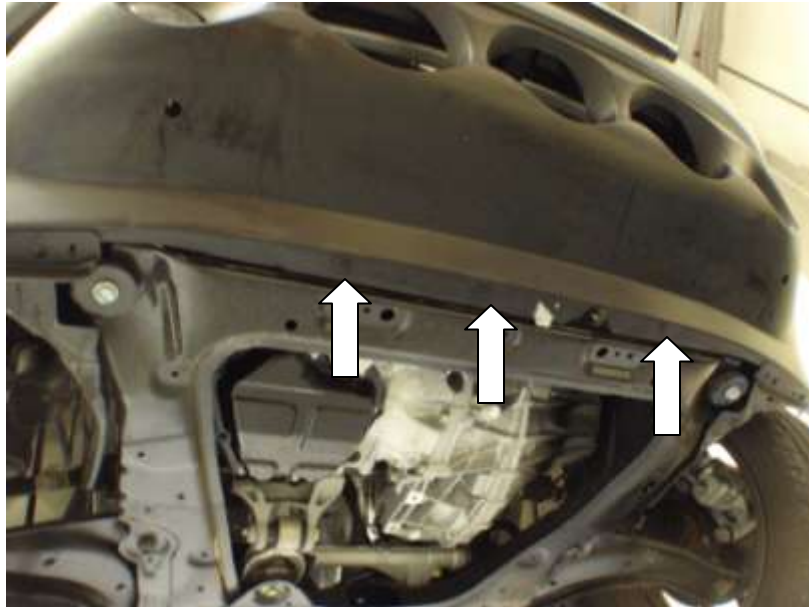


2. Using a small flat blade screwdriver or similar tool remove the 4 off plastic clips running along the top of grill.



Engineered for performance

3. Moving to the underside of the vehicle, remove the plastic clips in the centre of the bumper.



4. Using a Pozi Screwdriver remove both covers from in front of both wheels.



Engineered for performance

5. Using a flat blade screwdriver remove the plastic clip located at the front in both wheel arches.



6. Carefully pull the arch extension away from the bodywork.

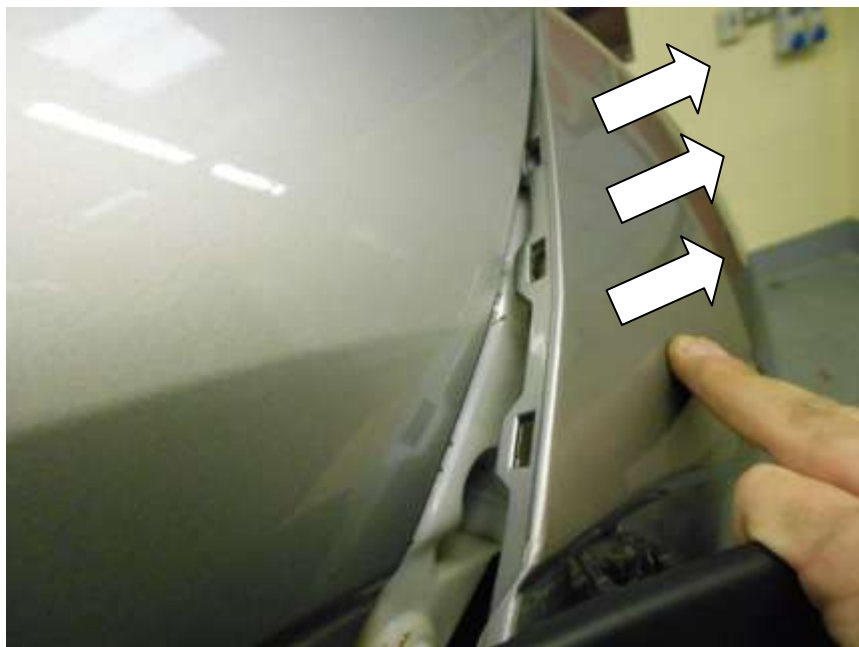


Engineered for performance

7. Pulling the arch extension to one side, use a 10mm spanner and undo the 1 off M6 bolt on both sides.



8. Carefully pull the bumper away from the clips that run up the bodywork and under the headlight. These are the last fixings holding the bumper to the vehicle.



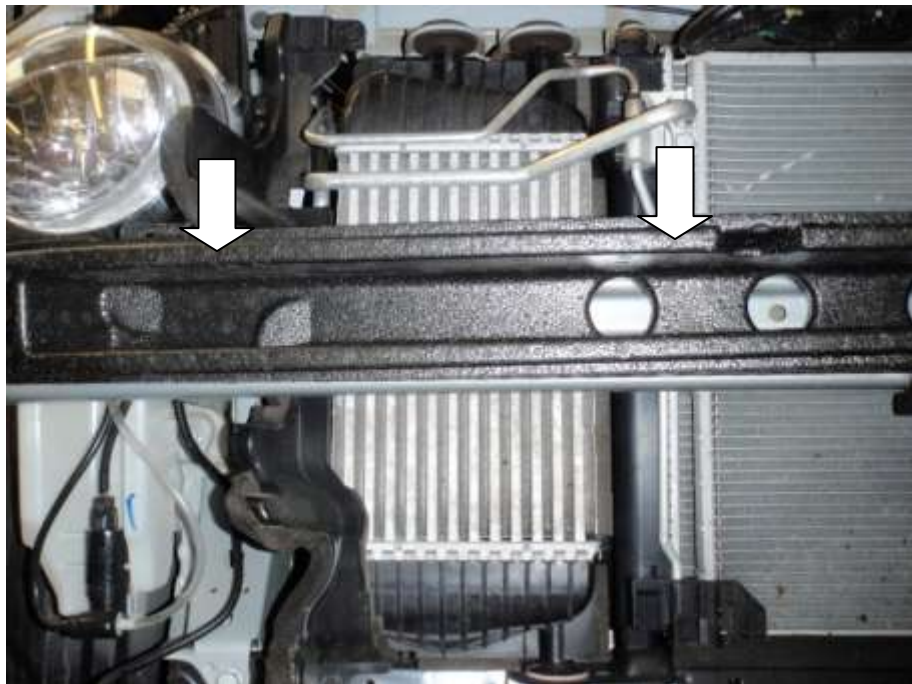
Engineered for performance

9. For this part you may require a second person. One person to hold the bumper while the second reaches inside to undo the connectors to the fog lights.



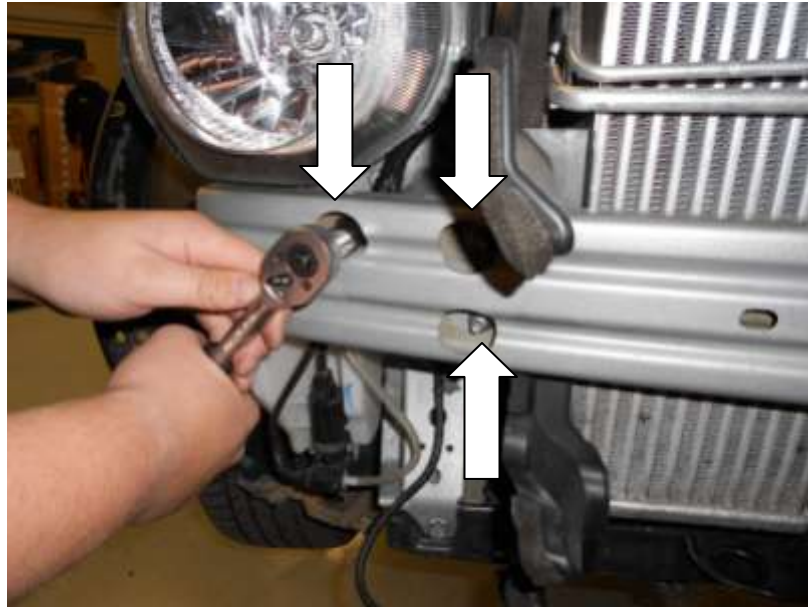
10. Place the bumper in a safe place to prevent damage while working on the rest of the vehicle.

11. Remove the foam crash bar cover and store away from the vehicle.



Engineered for performance

12. Using a 13mm socket and extension bar undo the 3 off nuts at each end of the crash bar and remove it from the vehicle.



13. Using a flat blade screwdriver remove the 2 off plastic clips on the air guide.



Engineered for performance

14. Moving to the engine bay, remove the engine cover, with a firm pull upwards. Using a 7mm hose clamp driver or flat blade screwdriver undo the 2 off jubilee clips.



15. Undo the jubilee clip on the intercooler inlet and remove the standard hose.



Engineered for performance

16. Using the 2 off large cable ties supplied. Secure the radiator and A/C to the front panel. One at each end of the radiator.



17. Using a 16mm socket remove the 2 off bolts at the front of the lower beam.



Engineered for performance

18. Using a 16mm socket partially undo the vertical bolt in the lower beam at the radiator end.

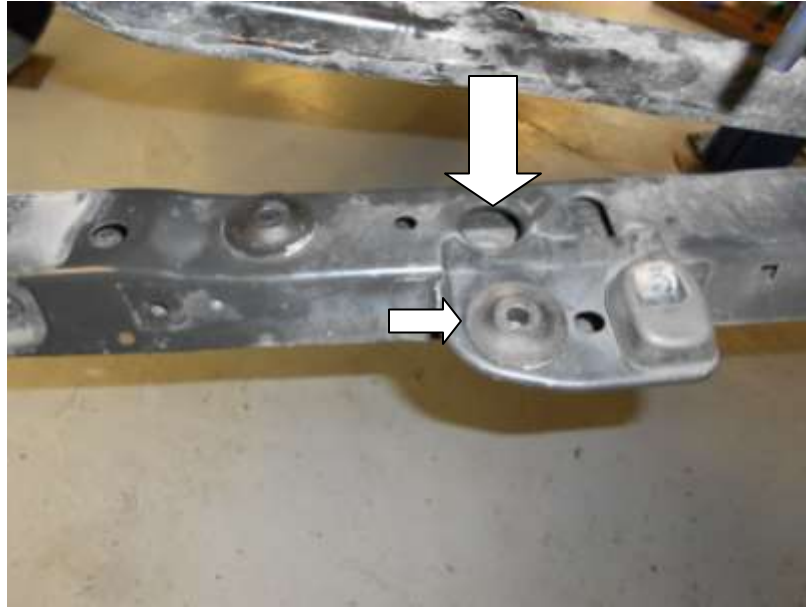


19. Carefully undo the vertical bolt in the lower beam at the intercooler end and the beam will drop away and the intercooler can be slid out of position.

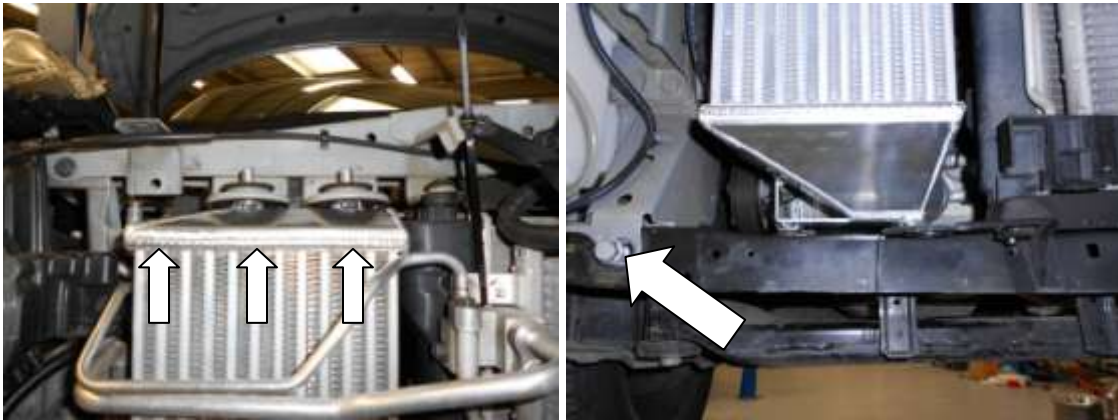


Engineered for performance

20. With the standard intercooler removed you are now ready to fit your new Forge Intercooler. Reposition one of the lower mounting bushes.



21. Carefully slide your Forge intercooler into position. Lift the lower beam into position and secure in position with one of the original 16mm fixings.



22. Secure the lower beam with the original bolts, refit the air guide and crash bar.

Engineered for performance

23. Moving back to the engine bay, unplug the MAP sensor and undo the bolt using a 10mm spanner. Remove the sensor and store in a safe place.



24. Using large pliers or a similar tool disconnect the pipes running to the dump valve.



Engineered for performance

25. Using a 7mm hose clamp driver undo the jubilee clip at the throttle body. Finally undo the 10mm bolt and the standard pipe work can be removed this will now have to be removed. Remove Dump valve from the standard pipe work and then attach it to the new hard pipe with the fixings provided. Remember to remove the standard sealing O-RING from the standard valve.
26. From the kit of silicone hoses and hard pipes provided select the alloy 60mm Dia. straight section and the unequal length 90 Deg. Bend and secure with a suitable jubilee clip.



27. From underneath the car feed this pipe up between the intercooler and engine. Secure the open end of the silicone bend to the intercooler outlet.
28. From the kit of silicone hoses select longest silicon hose, and with the straight part running across the top of the engine feed this pipe down between the intercooler and the engine from the top and secure with a suitable jubilee clip. Once in place at the bottom, use another jubilee clip to secure the top hose to the turbocharger outlet.



Engineered for performance

29. Secure the 70/60mm Silicone Reducer to the Throttle body outlet with a suitable jubilee clip.
30. Using a flat blade screwdriver remove the plastic wiring clip. Undo the bolt using a 10mm socket or spanner.



31. Fit the silicone S-bend to the outlet of the intercooler and secure with a suitable clip.



Engineered for performance

32. Place the remaining alloy bend into the open end of the silicone hose coming from the intercooler. Push the other end of the alloy tube into the silicone reducer on the throttle body. Using the original bolt secure the bracket next the filler neck. With the M6 X 16mm secure the other end of the ally bend.

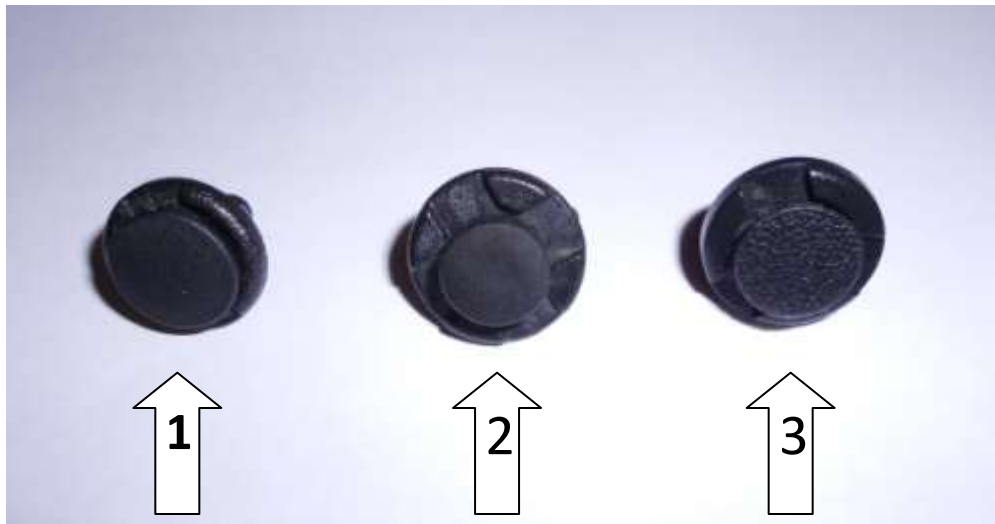


33. Bolt the Map Sensor the sensor boss with the M6 x 12 mm and M6 washer provided. Reconnect the wiring.
34. Reconnect both pipes to the dump valve and secure with the original clips.

Engineered for performance



35. Check all hose clamps and fixings before refitting the bumper. Follow steps 9 to 2 in reverse to reassemble your vehicle. ** Please Note: Three different types of plastic clips are used to retain the bodywork on the Juke. They are of different length and reassembly will be difficult if put in the wrong locations.



36. Type 1: 2 Slots – Inside both wheel arches and underneath bumper. Type 2: 4 Slots - Centre of the bumper underneath. Type 3: 3 Slots – Longer type for the top of the front bumper.

37. Your installation is now complete. Enjoy Your New Performance!

Engineered for performance

Check out WWW.FORGEMOTORSPORT.CO.UK and
WWW.FORGEMOTORSPORT.COM

For a full range of performance products for your vehicle.

As always, with any questions or concerns about this product or anything else, please feel free to contact your local or preferred Forge Motorsport Dealer/ Installer, or you may contact us directly.

Forge Motorsport UK – (+44)1 452 380 999 / info@forgemotorsport.co.uk

Forge Motorsport US – (407)-447-5363 / sales@forgemotorsport.com



ENGINEERED FOR PERFORMANCE